

Midsomer Norton Primary School



Head teacher: Mr Alun Randell

Dear Parents/ Carers,

It is not long to Christmas now and there is an air of excitement in the school. As I sit in the office I can hear the sound of children practicing for their Christmas shows. Performances such as this take a lot of planning, preparation and practice but they are always worth it. It is always such a joy to see children overcome any nerves and to see the pride they show at the end of the show. We are lucky to have such dedicated, creative staff who put in so much of their own time to make the shows a success.

Small amount of tickets for Infants Weds 6th & Thurs 7th and KS2 Weds 13th and Thurs 14th afternoon performances still available. Thank you.

Christmas Fayre

The school Christmas Fayre is 11:00pm - 2:00pm tomorrow. We hope you are able to join us. A big thank you in advance to the PSG for all their efforts to make the fayre a success.

The Stroke Association

You may remember that earlier in the year, a number of our teaching assistants organised a coffee morning in support of three charities who have supported members of our school community in recent months: MacMillan, the Alzheimer's Society and the Stroke Association. On Wednesday, the Stroke association visited school to talk to our children and to thank the children and staff for their efforts.



Sports News

Please return all Sports outfits as we are very short in all departments. Thank you.

School charity - mental health

Over the next few days, our Champions for Change will be organising a vote to identify our school charity for the year. This year, in keeping with our focus on encouraging positive mental health the children will choose from a number of mental health charities. We will be holding a collection for the chosen charity at each of our Christmas shows.

Persistent absence & punctuality

The government defines persistent absence as attendance of less than 90% over the year. Schools are expected to promote good attendance and to keep parents/carers informed of any concerns about their child's attendance. The national average for attendance is 96%. I am pleased to say that our school attendance is usually slightly higher than this overall; however, for a number of children attendance is either below 90% or in danger of falling below 90%. Whilst we recognise that illness can impact on a child's attendance, we will be sending letters home to parent/carers of all children whose attendance is less than 95% next week so that they are aware of their child's attendance and the potential impact on their education. Interestingly, so far this year



Christmas Fayre, this Saturday 2nd December 11am-2pm

Please come along and support our Christmas Fayre and bring your family and friends. Kick off the festive season with a visit to Santa, do some (free!) Christmas craft, scoff mince pies and bacon rolls and visit loads of lovely stalls - crafts, art, cakes, hair braids, nails and hair feathers. We've got some fabulous raffle prizes and of course there are the usual favourites: face painting and sweetie and drinks tombolas.

Christmas Film, Friday 15th December

Look out next week for the PSG letter inviting the children to our Christmas film. Straight after school on the last day of term.

POPPY APPEAL

We collected £338.48 for the recent Poppy Appeal. Thank you.

SUNBEAMS NURSERY

We are holding an OPEN DAY 9-3.30 Friday 8TH December.

our Reception children have the best attendance, despite being amongst the youngest members of the school!

We will also be sending letters to parents/carers of children who are frequently late for school. Please remember that lessons begin at 8:45am and children need to arrive at school in sufficient time to hang up their coats and be in class on time.

Have a lovely weekend!

Alun Randell
Head teacher



News



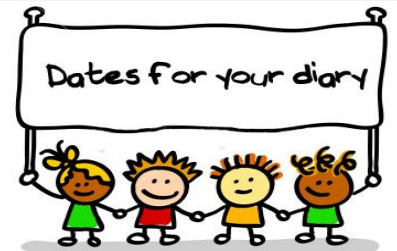
Don't forget that you can catch up with what's going on in school on our twitter feed:

<https://twitter.com/MSNPrimary>

Letters home this week:

All letters are uploaded to the school website

KS2 outfit suggestions



Tues 5th Dec 9.30am KS1 Nativity
Weds 6th Dec 1.45pm KS1 Nativity
Thurs 7th Dec 9.30am KS1 Nativity
Weds 13th Dec 9.30am KS2 Show
Thurs 14th Dec 1.45 pm KS2 Show
Thurs 14th Dec 600pm KS2 Show
Fri 15th Dec Last Day Term
Tues 2nd Jan 2018 Inset Day
Weds 3rd Jan Term 3 starts



Head Teacher Awards
Ava Remy Adam Zak
Molly Bradley Charlie Sinead
Eli Pippa Seb Lucas Sara



Gold Awards

For demonstrating exemplary behaviour...

Evie Ralphie Kai Frankie

Ellie Toby James Jasmine Thomas

Ashlee William Dominic Maddie



Birthdays

Macy Emelia Lucas Bella

Alesha Adam George Charlotte

Attendance Champions of the week

1 st	Moon	100.0%
Joint 2 nd	Venus, Mars, Neptune & Jupiter	99.4%